

Printed Circuit Boards and Electro-Mechanical Assembly



Development
Industrialization
Prototyping
Production
Test

Industries:
Automation
Automotive
Aviation
Defense
Medical
Railway
Telecommunication

Elettronica is a leading company which has long years of experience in assembly of electro-mechanical components as well as antenna's manufacturing. Elettronica GmbH completes its portfolio with a modern production line for PCB.

Elettronica GmbH provides a manufacturing service based on an extensive expertise and advanced production and test facilities such as anechoic chamber and ESS testing. To ensure product conformity, all complex circuit board assemblies and electro-mechanical assemblies are subject to our careful testing.

We support any market segment requiring high quality standards and high complexity items thanks to the exploitation of both state-of-the-art-technologies and assets.

Elettronica GmbH aims to create enduring relationships with its customers.

Certifications:

ISO 9001, EN 9100

ISO 14001

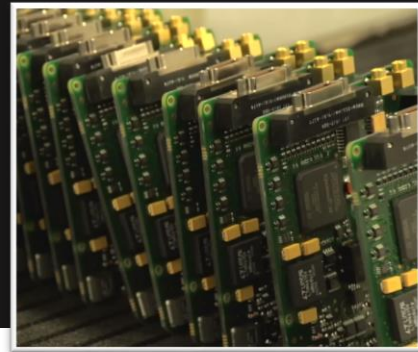
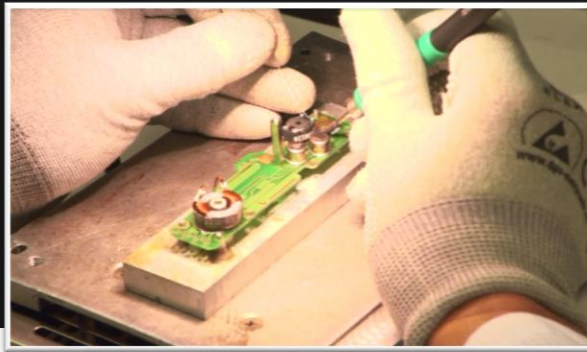
IPC-A-610 Class 1-3 and IPC/WHMA-A-620

certified operators and inspectors

IPC-7711/7721 certified operators

MIL Standard

Assembly and Testing



Industrialization, Prototyping and Production of printed circuit boards for military and commercial markets and suppliers

SMT and THT Assembly

- SOIC, PLCC, TSOP, QFP, DPAK
- Flip Chip
- CSP with 0.2 mm pitch
- BGA with 0.3 mm pitch
- μ BGA 01005, 0201, 0402

Test and Measurement Equipment

- Automatic Optical Inspection (AOI)
- X-Ray Test
- In-circuit Test (ICT)
- Burn-In-Test

- Volumes: low/medium
- Complexity of boards: one layer, multilayer

Handling of classified material

Development, Prototyping and Assembly of electro-mechanical units for military and commercial markets and suppliers

Assembly capabilities: Chassis, Antennas, Cables

- Test and Measurement Equipment
- Electrical and RF test
- Anechoic Chamber (test and calibration) up to 18 GHz
- ESS (temperature, humidity, vibration):
 - Temperature -70°C to $+180^{\circ}\text{C}$
 - Humidity 10 %- 98 %
 - Vibration/Shock

- Trouble shooting analysis
- Repair capabilities

Purchase and Material Management

Warehouse and Consignment Stock